

Families and committed relationships

Stages of reproduction



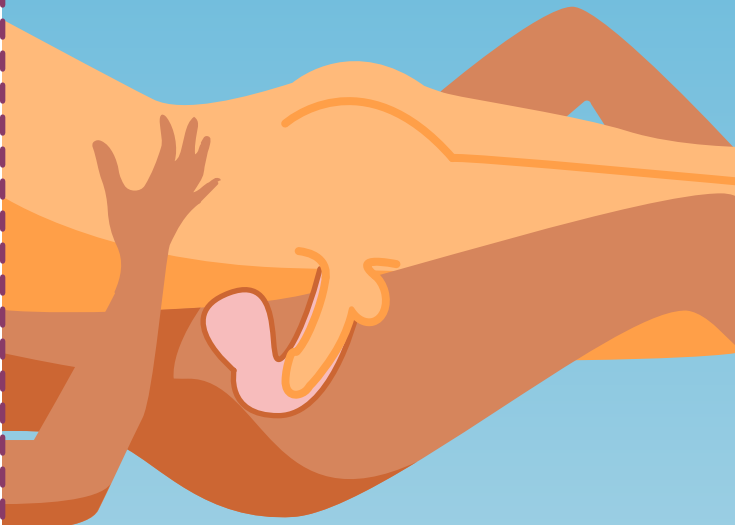
The couple decide they want to start a family.



The baby is born after about nine months in the womb.



The male penis goes inside the female vagina.



A couple are in a committed relationship.

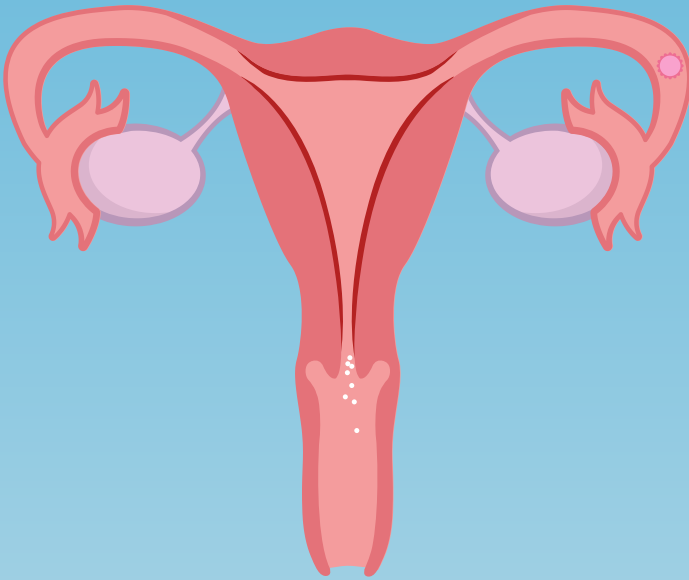


Families and committed relationships

Stages of reproduction



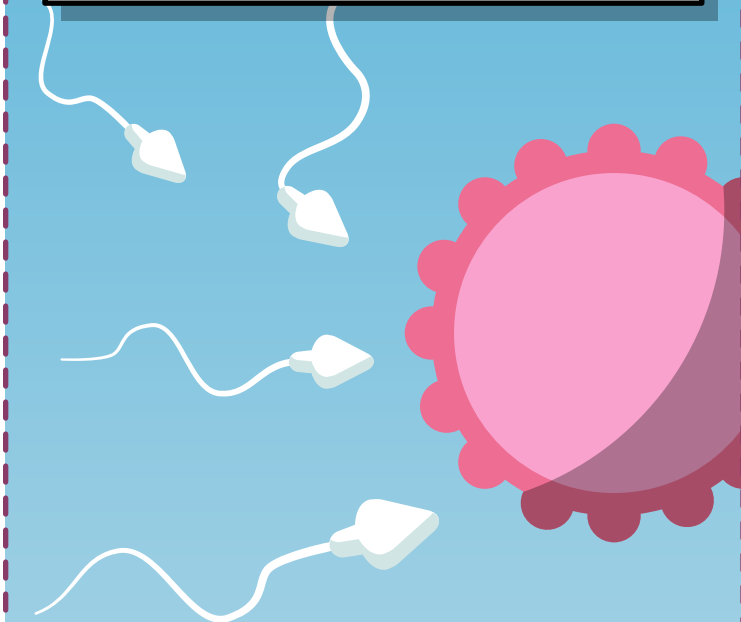
Sperm comes out from the tip of the penis into the female body.



One sperm fertilises the egg.



The sperm travel inside the female body and race towards an egg.



The couple decides they are both ready to get closer and both want to have sexual intercourse.

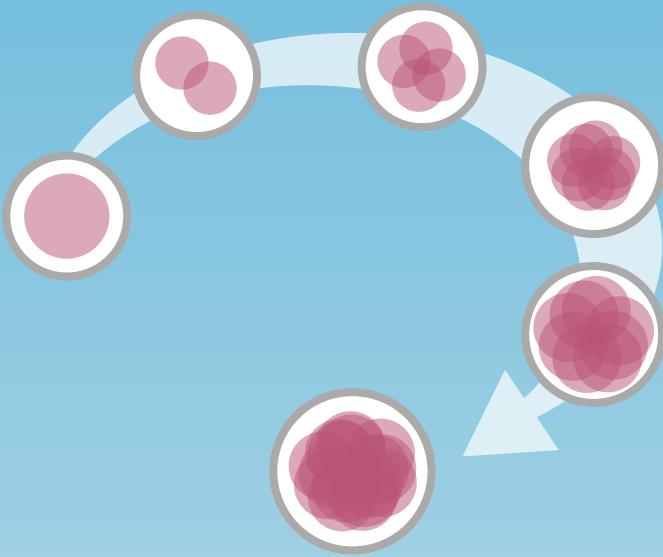


Families and committed relationships

Stages of reproduction



The fertilised egg divides into two cells. It then divides again and again and start forming a foetus.



The baby is called a foetus while it is still inside the womb. It grows bigger during the pregnancy.

