

Grange Primary School



'Together we make a difference'

17 January 2025

SCHOOL WEBSITE: WWW.GRANGE.LANCS.SCH.UK

ALL NEWSLETTERS POSTED ON WEBSITE

Email address: office@grange.lancs.sch.uk

ATTENDANCE: PUNCTUALITY

We have an increasing number of children arriving late at school.

Our school day starts at 8.55am and finishes at 3.25pm.

If we have specific concerns, we will contact those parents directly. We understand that 'things happen' - we are more concerned when this becomes a regular pattern.

Please check your routes and routines to ensure you are here on time. Thank you.

Stars of the Week

Congratulations to the following children who have all been awarded Star of the Week.

We have a Star (chosen by staff) and a Players' Player (chosen by children) from each class:

W/E 17 Jan 25

Elm Class: Olivia, Abdul

Maple Class: Ayat, Lennox

Chestnut Class: Hysan, Mishka

Rowan Class: Marlie, Ibrahim

Beech Class: Tamim, Jack

Willow Class: Emma, Noah

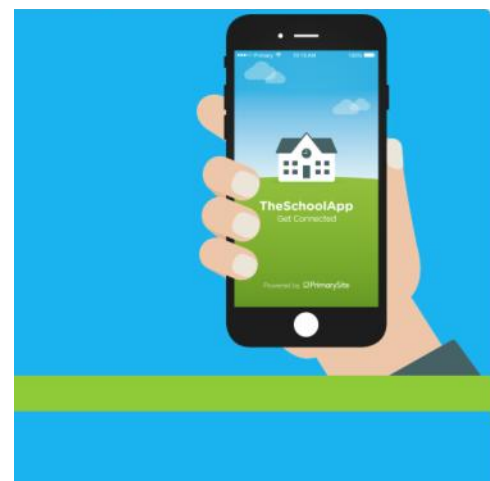
Oak Class: Dara, Minha

MESSAGING SERVICES

We are now coming to the end of our licence with Groupcall so all our messaging will be coming through 'TheSchoolApp'.

Please go to our school website for instructions on how to download and activate on your phone or search 'TheSchoolApp' online.

On our website, the instructions are under the Parent tab.



DIARY DATES FOR SPRING TERM 2025

(Additional events will be added or amended—please check school website or subsequent news-letters)

Mon 20 Jan	Year 4 Swimming—On for 2 weeks
Fri 24 Jan	KS2 Poetry Performances
Mon 27 Jan	Year 5 Hockey Skills—LHS
Fri 31 Jan	KS1 Poetry Performances
Mon 3 Feb	Year 5 Hockey Skills—LHS
Wed 5 Feb	Year 1—Ribbleton Walk
Thur 13 Feb	Year 2—Blackburn Museum Trip
Fri 14 Feb	Year 5—Alston Observatory Trip SCHOOL CLOSSES FOR HALF TERM—3:25PM
Mon 24 Feb	SCHOOL REOPENS

Please let us know of any achievements outside school and we can celebrate them here!



Should I keep my child off school?



Yes

Until...

Chickenpox	at least 5 days from the onset of the rash and until all blisters have crusted over
Diarrhoea and Vomiting	48 hours after their last episode
Cold and Flu-like illness (including COVID-19)	they no longer have a high temperature and feel well enough to attend. Follow the national guidance if they've tested positive for COVID-19.
Impetigo	their sores have crusted and healed, or 48 hours after they started antibiotics
Measles	4 days after the rash first appeared
Mumps	5 days after the swelling started
Scabies	they've had their first treatment
Scarlet Fever	24 hours after they started taking antibiotics
Whooping Cough	48 hours after they started taking antibiotics

No

but make sure you let their school or nursery know about...

Hand, foot and mouth	Glandular fever
Head lice	Tonsillitis
Threadworms	Slapped cheek



SCAN ME

Advice and guidance

To find out more, search for health protection in schools or scan the QR code or visit <https://qrco.de/minfec>.

Myerscough College Basketball Academy

RISING HOOPERS

M Y E R S C O U G H | B A S K E T B A L L

**UNDER 11'S
BASKETBALL
SESSIONS**



STARTING SUNDAY JANUARY 19TH

9:30 -10:30AM

SCHOOL YEARS 5 AND BELOW

Sessions at Myerscough College, PR3 0RY

PLEASE COMPLETE SIGN UP FORM

For more Info - Jshuttlewood@myerscough.ac.uk

NHS Pharmacy First Service

Did you know that the NHS Pharmacy First Service enables children and adults to get convenient access to healthcare advice and treatment where appropriate, for seven common conditions without the potential delay of having to wait for a GP appointment? Accessing the service may mean that we can help children feel better and get back to school as quickly as possible, as well as supporting parents/carers to also get better if they are unwell with one of the conditions covered under the service.

There is no need to make an appointment; parents or carers can pop into their local Boots pharmacy with their child and ask for help under the service.

Support for the following conditions can be accessed under the service, free of charge (unless NHS prescription charges apply):

<u>Common condition</u>	<u>Patient eligibility</u>
Earache	1 to 17 years
Impetigo	1 year and over
Infected insect bites and stings	1 year and over
Sore throats	5 years and over
Sinusitis	12 years and over
Uncomplicated urinary tract	Women 16 to 64 years
Shingles	18 years and over



SPRING WEEKLY MEAL PLAN:
 Week beginning 06/01/2025

		MONDAY	TUESDAY	WEDNESDAY	THURSDAY	FRIDAY FUNDAY
WEEK ONE MAIN COURSE	MAIN 1	Pepperoni pizza	Tomato & Mascarpone Pasta, Salad and Home Made Bread	Toad in the Hole Yorkshire Pudding, Potatoes & Vegetables	Fish Fingers, Mash & Beans	Chicken Nuggets & Fries
	MAIN 2 (Vegetarian)	Margherita pizza	Tomato & Mascarpone Pasta, Salad and Home Made Bread	Quorn Toad in the Hole, Yorkshire Pudding, Potatoes & Vegetables	Fish Fingers, Mash & Beans	Quorn Nuggets & Fries
WEEK TWO MAIN COURSE	MAIN 1	Beef Pastie and Wedges	Southern Fried Chicken Wraps, Savoury Rice & Salad	Turkey Roast Dinner, Mash Potatoes, Vegetables & Gravy	Chicken Tikka Masala, Rice & Mini Naan Bread	Pepperoni pizza
	MAIN 2 (Vegetarian)	Cheese Pastie and Wedges	Southern Fried Quorn Wraps, Savoury Rice & Salad	Quorn Fillet Roast Dinner, Mash Potatoes, Vegetables & Gravy	Vegetable Tikka Masala, Rice & Mini Naan Bread	Margherita pizza
WEEK THREE MAIN COURSE	MAIN 1	Meat & Potato Pie and Veg	Chicken & Black Bean Stir Fry & Rice	Chicken Roast Dinner, Yorkshire Pudding, Potatoes and Vegetables	Chilli Boats with Savoury Rice	Fish, Chips & Mushy / Garden Peas
	MAIN 2 (Vegetarian)	Cheese Pie and Veg	Vegetable Black Bean Stir Fry & Rice	Quorn Roast Dinner, Yorkshire Pudding, Potatoes and Vegetables	Vegetable Chilli Boats with Savoury Rice	Fish, Chips & Mushy / Garden Peas
WEEK FOUR MAIN COURSE	MAIN 1	Beef Burger, Fries & Sweetcorn / beans	Chicken Korma, Rice & Mini Naan Bread	Roast Gammon, Roast Potatoes and Vegetables	Sweet & Sour Chicken & Rice	Friday Brunch
	MAIN 2 (Vegetarian)	Quorn Burger, Fries & Sweetcorn / Beans	Sweet Potato Curry, Rice & Mini Naan Bread	Mediterranean Vegetable Pasta with Herb Bread	Oriental Vegetables	Friday Brunch

Please inform the School Business Manager IMMEDIATELY of any MEDICAL ALLERGIES your child may have.



SPRING WEEKLY MEAL PLAN:
 Week beginning 06/01/2025

		With assorted fillings including tuna, cheese and beans Served with salad				
MENU ITEMS AVAILABLE EVERY DAY	OVEN BAKED JACKET POTATO	Fresh Fruit Yogurts Sundaes	Fresh Fruit Yogurts Sundaes	Fresh Fruit Yogurts Sundaes	Fresh Fruit Yogurts Sundaes	Fresh Fruit Yogurts Sundaes
	COLD DESSERT	Rice Pudding	Chocolate sponge and custard	Home Made Flapjack	Sticky Toffee Pudding & Custard	Sprinkle cake
	HOT DESSERT	Apple Crumble with Custard	Carrot Cake Muffins	Banana Cake	Chocolate Chip Muffin	Pear Crumble with Custard
SALAD BAR & ASSORTED BREADS						

Please inform the School Business Manager IMMEDIATELY of any MEDICAL ALLERGIES your child may have.

Grange Primary School Calendar 2024 - 2025

September 2024

S	M	T	W	T	F	S
	1	2	3	4	5	6
	8	9	10	11	12	13
	15	16	17	18	19	20
	22	23	24	25	26	27
	29	30				

October 2024

S	M	T	W	T	F	S
		1	2	3	4	5
	6	7	8	9	10	11
	13	14	15	16	17	18
	20	21	22	23	24	25
	27	28	29	30	31	

November 2024

S	M	T	W	T	F	S
					1	2
	3	4	5	6	7	8
	10	11	12	13	14	15
	17	18	19	20	21	22
	24	25	26	27	28	29
						30

December 2024

S	M	T	W	T	F	S
	1	2	3	4	5	6
	8	9	10	11	12	13
	15	16	17	18	19	20
	22	23	24	25	26	27
	29	30	31			

January 2025

S	M	T	W	T	F	S
		1	2	3	4	
	5	6	7	8	9	10
	12	13	14	15	16	17
	19	20	21	22	23	24
	26	27	28	29	30	31

February 2025

S	M	T	W	T	F	S
						1
	2	3	4	5	6	7
	9	10	11	12	13	14
	16	17	18	19	20	21
	23	24	25	26	27	28

March 2025

S	M	T	W	T	F	S
						1
	2	3	4	5	6	7
	9	10	11	12	13	14
	16	17	18	19	20	21
	23	24	25	26	27	28
	30	31				

April 2025

S	M	T	W	T	F	S
		1	2	3	4	5
	6	7	8	9	10	11
	13	14	15	16	17	18
	20	21	22	23	24	25
	27	28	29	30		

May 2025

S	M	T	W	T	F	S
			1	2	3	
	4	5	6	7	8	9
	11	12	13	14	15	16
	18	19	20	21	22	23
	25	26	27	28	29	30
						31

June 2025

S	M	T	W	T	F	S
	1	2	3	4	5	6
	8	9	10	11	12	13
	15	16	17	18	19	20
	22	23	24	25	26	27
	29	30				

July 2025

S	M	T	W	T	F	S
			1	2	3	4
	6	7	8	9	10	11
	13	14	15	16	17	18
	20	21	22	23	24	25
	27	28	29	30	31	

August 2025

S	M	T	W	T	F	S
					1	2
	3	4	5	6	7	8
	10	11	12	13	14	15
	17	18	19	20	21	22
	24	25	26	27	28	29
	31					

HOLIDAY
TRAINING DAYS

Grange Primary School – Term Time Dates & Holiday Pattern 2025-26

September 2025						
S	M	T	W	T	F	S
	1	2	3	4	5	6
7	8	9	10	11	12	13
14	15	16	17	18	19	20
21	22	23	24	25	26	27
28	29	30				

October 2025						
S	M	T	W	T	F	S
			1	2	3	4
5	6	7	8	9	10	11
12	13	14	15	16	17	18
19	20	21	22	23	24	25
26	27	28	29	30	31	

November 2025						
S	M	T	W	T	F	S
						1
2	3	4	5	6	7	8
9	10	11	12	13	14	15
16	17	18	19	20	21	22
23	24	25	26	27	28	29
30						

December 2025						
S	M	T	W	T	F	S
	1	2	3	4	5	6
7	8	9	10	11	12	13
14	15	16	17	18	19	20
21	22	23	24	25	26	27
28	29	30	31			

January 2026						
S	M	T	W	T	F	S
			1	2	3	
4	5	6	7	8	9	10
11	12	13	14	15	16	17
18	19	20	21	22	23	24
25	26	27	28	29	30	31

February 2026						
S	M	T	W	T	F	S
1	2	3	4	5	6	7
8	9	10	11	12	13	14
15	16	17	18	19	20	21
22	23	24	25	26	27	28

March 2026						
S	M	T	W	T	F	S
1	2	3	4	5	6	7
8	9	10	11	12	13	14
15	16	17	18	19	20	21
22	23	24	25	26	27	28
29	30	31				

April 2026						
S	M	T	W	T	F	S
			1	2	3	4
5	6	7	8	9	10	11
12	13	14	15	16	17	18
19	20	21	22	23	24	25
26	27	28	29	30		

May 2026						
S	M	T	W	T	F	S
					1	2
3	4	5	6	7	8	9
10	11	12	13	14	15	16
17	18	19	20	21	22	23
24	25	26	27	28	29	30
31						

June 2026						
S	M	T	W	T	F	S
	1	2	3	4	5	6
7	8	9	10	11	12	13
14	15	16	17	18	19	20
21	22	23	24	25	26	27
28	29	30				

July 2026						
S	M	T	W	T	F	S
			1	2	3	4
5	6	7	8	9	10	11
12	13	14	15	16	17	18
19	20	21	22	23	24	25
26	27	28	29	30	31	

August 2026						
S	M	T	W	T	F	S
						1
2	3	4	5	6	7	8
9	10	11	12	13	14	15
16	17	18	19	20	21	22
23	24	25	26	27	28	29
30	31					

INSET Days – school not open

Holidays – school not open

Easter Sunday is 5th April 2026

Community Drop In

Bringing YOUR services together!

Come and join us , to find out what support is available in your community!
We have activities on for children and young people whilst having professional's on hand to offer advice or support!



Whats on? We will have organisations from across Preston available to chat about what support is available in your community including; housing support, benefit advice, support available for children and young people and much more.

No need to book

Free Refreshments Provided !

Dates: 27th January 2025 & 24th February 2025

Time: 2.30pm-5pm

Address: Units 10&12 Oakham Court, Avenham, Preston
PR1 3XP



ONE STOP SHOP

A monthly drop in where families

can access free advice & support

Pathway Navigator-ASD-ADHD & More

School Nurse - Bed wetting Sleep Hygiene & More

Housing - Preston City Council - Gateway

Citizen Advice

Benefit Advice - DWP

Emotional Health and Wellbeing

Debt Advice/Support

Employment advice - DWP

Relationship advice

Home safety - Lancs Fire & Rescue

Free Funded Nursery Places

Lancashire Women

Find out about:

Mental health support

Accessing Food Banks

Household living support

**No
Appointment
Needed**

**Last
Tuesday of
the month,
2pm 'until
4pm**

**RIBBLETON
FAMILY
HUB
PRESTON**

Ribbleton Family Hub,
Ribbleton Hall Drive,
Ribbleton,
Preston,
PR2 6EE