

Grange Primary School



'Together we make a difference'

10 January 2025

SCHOOL WEBSITE: WWW.GRANGE.LANCS.SCH.UK

ALL NEWSLETTERS POSTED ON WEBSITE

Email address: office@grange.lancs.sch.uk

HAPPY NEW YEAR—WELCOME BACK!

Happy New Year everyone. We have had a lovely first week back. It is lovely to see everyone well and rested.

Thank you for navigating the poor weather and terrible roads to get children back into school every day and on time!

SPRING MENU

The Spring Menu is now on the school website and included in this newsletter.

Stars of the Week

Congratulations to the following children who have all been awarded Star of the Week.

We have a Star (chosen by staff) and a Players' Player (chosen by children) from each class:

W/E 10 Jan 25

Elm Class: Ivy, Elizabeth

Maple Class: Talia, Ayaan

Chestnut Class: Zaid, Harper

Rowan Class: Ettiene, Carter

Beech Class: Jenson, Zaynah

Willow Class: Danya, Amani, Ayesha

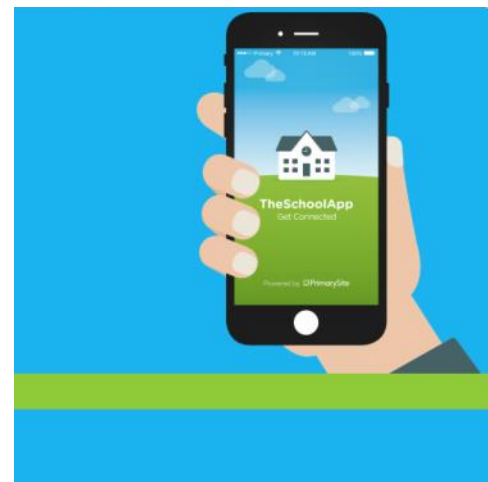
Oak Class: Kealan, Dara

MESSAGING SERVICES

We are now coming to the end of our licence with Groupcall so all our messaging will be coming through TheSchoolApp.

Please go to our school website for instructions on how to download and activate on your phone or search 'TheSchoolApp' online.

On our website, the instructions are under the Parent tab.



DIARY DATES FOR SPRING TERM 2024

(Additional events will be added or amended—please check school website or subsequent news-letters)

Mon 20 Jan	Year 4 Swimming—On for 2 weeks
Fri 24 Jan	KS2 Poetry Performances
Mon 27 Jan	Year 5 Hockey Skills—LHS
Fri 31 Jan	KS1 Poetry Performances
Thur 13 Feb	Year 2—Blackburn Museum Trip
Fri 14 Feb	Year 5—Alston Observatory Trip SCHOOL CLOSSES FOR HALF TERM—3:25PM
Mon 24 Feb	SCHOOL REOPENS



Wow—well done Reeco! This is a model of the Titanic built with Lego which Reeco has made over Christmas!

Please let us know of any achievements outside school and we can celebrate them here!



Should I keep my child off school?



Yes

Until...

Chickenpox	at least 5 days from the onset of the rash and until all blisters have crusted over
Diarrhoea and Vomiting	48 hours after their last episode
Cold and Flu-like illness (including COVID-19)	they no longer have a high temperature and feel well enough to attend. Follow the national guidance if they've tested positive for COVID-19.
Impetigo	their sores have crusted and healed, or 48 hours after they started antibiotics
Measles	4 days after the rash first appeared
Mumps	5 days after the swelling started
Scabies	they've had their first treatment
Scarlet Fever	24 hours after they started taking antibiotics
Whooping Cough	48 hours after they started taking antibiotics

No

but make sure you let their school or nursery know about...

Hand, foot and mouth	Glandular fever
Head lice	Tonsillitis
Threadworms	Slapped cheek



SCAN ME

Advice and guidance

To find out more, search for health protection in schools or scan the QR code or visit <https://qrco.de/minfec>.



SPRING WEEKLY MEAL PLAN:
Week beginning 06/01/2025

		MONDAY	TUESDAY	WEDNESDAY	THURSDAY	FRIDAY FUNDAY
WEEK ONE MAIN COURSE	MAIN 1	Pepperoni pizza	Tomato & Mascarpone Pasta, Salad and Home Made Bread	Toad in the Hole Yorkshire Pudding, Potatoes & Vegetables	Fish Fingers, Mash & Beans	Chicken Nuggets & Fries
	MAIN 2 (Vegetarian)	Margherita pizza	Tomato & Mascarpone Pasta, Salad and Home Made Bread	Quorn Toad in the Hole, Yorkshire Pudding, Potatoes & Vegetables	Fish Fingers, Mash & Beans	Quorn Nuggets & Fries
WEEK TWO MAIN COURSE	MAIN 1	Beef Pastie and Wedges	Southern Fried Chicken Wraps, Savoury Rice & Salad	Turkey Roast Dinner, Mash Potatoes, Vegetables & Gravy	Chicken Tikka Masala, Rice & Mini Naan Bread	Pepperoni pizza
	MAIN 2 (Vegetarian)	Cheese Pastie and Wedges	Southern Fried Quorn Wraps, Savoury Rice & Salad	Quorn Fillet Roast Dinner, Mash Potatoes, Vegetables & Gravy	Vegetable Tikka Masala, Rice & Mini Naan Bread	Margherita pizza
WEEK THREE MAIN COURSE	MAIN 1	Meat & Potato Pie and Veg	Chicken & Black Bean Stir Fry & Rice	Chicken Roast Dinner, Yorkshire Pudding, Potatoes and Vegetables	Chilli Boats with Savoury Rice	Fish, Chips & Mushy / Garden Peas
	MAIN 2 (Vegetarian)	Cheese Pie and Veg	Vegetable Black Bean Stir Fry & Rice	Quorn Roast Dinner, Yorkshire Pudding, Potatoes and Vegetables	Vegetable Chilli Boats with Savoury Rice	Fish, Chips & Mushy / Garden Peas
WEEK FOUR MAIN COURSE	MAIN 1	Beef Burger, Fries & Sweetcorn / beans	Chicken Korma, Rice & Mini Naan Bread	Roast Gammon, Roast Potatoes and Vegetables	Sweet & Sour Chicken & Rice	Friday Brunch
	MAIN 2 (Vegetarian)	Quorn Burger, Fries & Sweetcorn / Beans	Sweet Potato Curry, Rice & Mini Naan Bread	Mediterranean Vegetable Pasta with Herb Bread	Oriental Vegetables	Friday Brunch

Please inform the School Business Manager IMMEDIATELY of any MEDICAL ALLERGIES your child may have.



SPRING WEEKLY MEAL PLAN:
 Week beginning 06/01/2025

		With assorted fillings including tuna, cheese and beans Served with salad				
MENU ITEMS AVAILABLE EVERY DAY	OVEN BAKED JACKET POTATO	Fresh Fruit Yogurts Sundaes	Fresh Fruit Yogurts Sundaes	Fresh Fruit Yogurts Sundaes	Fresh Fruit Yogurts Sundaes	Fresh Fruit Yogurts Sundaes
	COLD DESSERT	Rice Pudding	Chocolate sponge and custard	Home Made Flapjack	Sticky Toffee Pudding & Custard	Sprinkle cake
	HOT DESSERT	Apple Crumble with Custard	Carrot Cake Muffins	Banana Cake	Chocolate Chip Muffin	Pear Crumble with Custard
SALAD BAR & ASSORTED BREADS						

Please inform the School Business Manager IMMEDIATELY of any MEDICAL ALLERGIES your child may have.

Grange Primary School Calendar 2024 - 2025

September 2024

S	M	T	W	T	F	S
	1	2	3	4	5	6
	8	9	10	11	12	13
	15	16	17	18	19	20
	22	23	24	25	26	27
	29	30				

October 2024

S	M	T	W	T	F	S
		1	2	3	4	5
	6	7	8	9	10	11
	13	14	15	16	17	18
	20	21	22	23	24	25
	27	28	29	30	31	

November 2024

S	M	T	W	T	F	S
					1	2
	3	4	5	6	7	8
	10	11	12	13	14	15
	17	18	19	20	21	22
	24	25	26	27	28	29
						30

December 2024

S	M	T	W	T	F	S
	1	2	3	4	5	6
	8	9	10	11	12	13
	15	16	17	18	19	20
	22	23	24	25	26	27
	29	30	31			

January 2025

S	M	T	W	T	F	S
		1	2	3	4	
	5	6	7	8	9	10
	12	13	14	15	16	17
	19	20	21	22	23	24
	26	27	28	29	30	31

February 2025

S	M	T	W	T	F	S
						1
	2	3	4	5	6	7
	9	10	11	12	13	14
	16	17	18	19	20	21
	23	24	25	26	27	28

March 2025

S	M	T	W	T	F	S
						1
	2	3	4	5	6	7
	9	10	11	12	13	14
	16	17	18	19	20	21
	23	24	25	26	27	28
	30	31				

April 2025

S	M	T	W	T	F	S
		1	2	3	4	5
	6	7	8	9	10	11
	13	14	15	16	17	18
	20	21	22	23	24	25
	27	28	29	30		

May 2025

S	M	T	W	T	F	S
			1	2	3	
	4	5	6	7	8	9
	11	12	13	14	15	16
	18	19	20	21	22	23
	25	26	27	28	29	30
						31

June 2025

S	M	T	W	T	F	S
	1	2	3	4	5	6
	8	9	10	11	12	13
	15	16	17	18	19	20
	22	23	24	25	26	27
	29	30				

July 2025

S	M	T	W	T	F	S
			1	2	3	4
	6	7	8	9	10	11
	13	14	15	16	17	18
	20	21	22	23	24	25
	27	28	29	30	31	

August 2025

S	M	T	W	T	F	S
					1	2
	3	4	5	6	7	8
	10	11	12	13	14	15
	17	18	19	20	21	22
	24	25	26	27	28	29
	31					

HOLIDAY
TRAINING DAYS

Grange Primary School – Term Time Dates & Holiday Pattern 2025-26

September 2025						
S	M	T	W	T	F	S
		1	2	3	4	5
6	7	8	9	10	11	12
13	14	15	16	17	18	19
20	21	22	23	24	25	26
27	28	29	30			

October 2025						
S	M	T	W	T	F	S
			1	2	3	4
5	6	7	8	9	10	11
12	13	14	15	16	17	18
19	20	21	22	23	24	25
26	27	28	29	30	31	

November 2025						
S	M	T	W	T	F	S
						1
2	3	4	5	6	7	8
9	10	11	12	13	14	15
16	17	18	19	20	21	22
23	24	25	26	27	28	29
30						

December 2025						
S	M	T	W	T	F	S
		1	2	3	4	5
6	7	8	9	10	11	12
13	14	15	16	17	18	19
20	21	22	23	24	25	26
27	28	29	30	31		

January 2026						
S	M	T	W	T	F	S
			1	2	3	
4	5	6	7	8	9	10
11	12	13	14	15	16	17
18	19	20	21	22	23	24
25	26	27	28	29	30	31

February 2026						
S	M	T	W	T	F	S
	1	2	3	4	5	6
7	8	9	10	11	12	13
14	15	16	17	18	19	20
21	22	23	24	25	26	27
28						

March 2026						
S	M	T	W	T	F	S
	1	2	3	4	5	6
7	8	9	10	11	12	13
14	15	16	17	18	19	20
21	22	23	24	25	26	27
28	29	30	31			

April 2026						
S	M	T	W	T	F	S
			1	2	3	4
5	6	7	8	9	10	11
12	13	14	15	16	17	18
19	20	21	22	23	24	25
26	27	28	29	30		

May 2026						
S	M	T	W	T	F	S
			1	2		
3	4	5	6	7	8	9
10	11	12	13	14	15	16
17	18	19	20	21	22	23
24	25	26	27	28	29	30
31						

June 2026						
S	M	T	W	T	F	S
	1	2	3	4	5	6
7	8	9	10	11	12	13
14	15	16	17	18	19	20
21	22	23	24	25	26	27
28	29	30				

July 2026						
S	M	T	W	T	F	S
			1	2	3	4
5	6	7	8	9	10	11
12	13	14	15	16	17	18
19	20	21	22	23	24	25
26	27	28	29	30	31	

August 2026						
S	M	T	W	T	F	S
						1
2	3	4	5	6	7	8
9	10	11	12	13	14	15
16	17	18	19	20	21	22
23	24	25	26	27	28	29
30	31					

INSET Days – school not open

Holidays – school not open

Easter Sunday is 5th April 2026

ONE STOP SHOP

A monthly drop in where families

can access free advice & support

Pathway Navigator-ASD-ADHD & More

School Nurse - Bed wetting Sleep Hygiene & More

Housing - Preston City Council - Gateway

Citizen Advice

Benefit Advice - DWP

Emotional Health and Wellbeing

Debt Advice/Support

Employment advice - DWP

Relationship advice

Home safety - Lancs Fire & Rescue

Free Funded Nursery Places

Lancashire Women

Find out about:

Mental health support

Accessing Food Banks

Household living support

**No
Appointment
Needed**

**Last
Tuesday of
the month,
2pm 'until
4pm**

**RIBBLETON
FAMILY
HUB
PRESTON**

Ribbleton Family Hub,
Ribbleton Hall Drive,
Ribbleton,
Preston,
PR2 6EE